



Fellowship Hall Renovation

Kitchen/Lounge Details



Kitchen / Lounge Redesign Conceptual Plan

Kitchen Highlights

- increase from 250 sf to 406 sf
- homestyle (non-industrial)
- 3 large ovens
- 2 refrigerators
- 2 dishwashers
- 1 accessible sink
- 1 deep sink
- Icemaker
- 8' x 4' island
- 6 burner cooktop
- Additional window

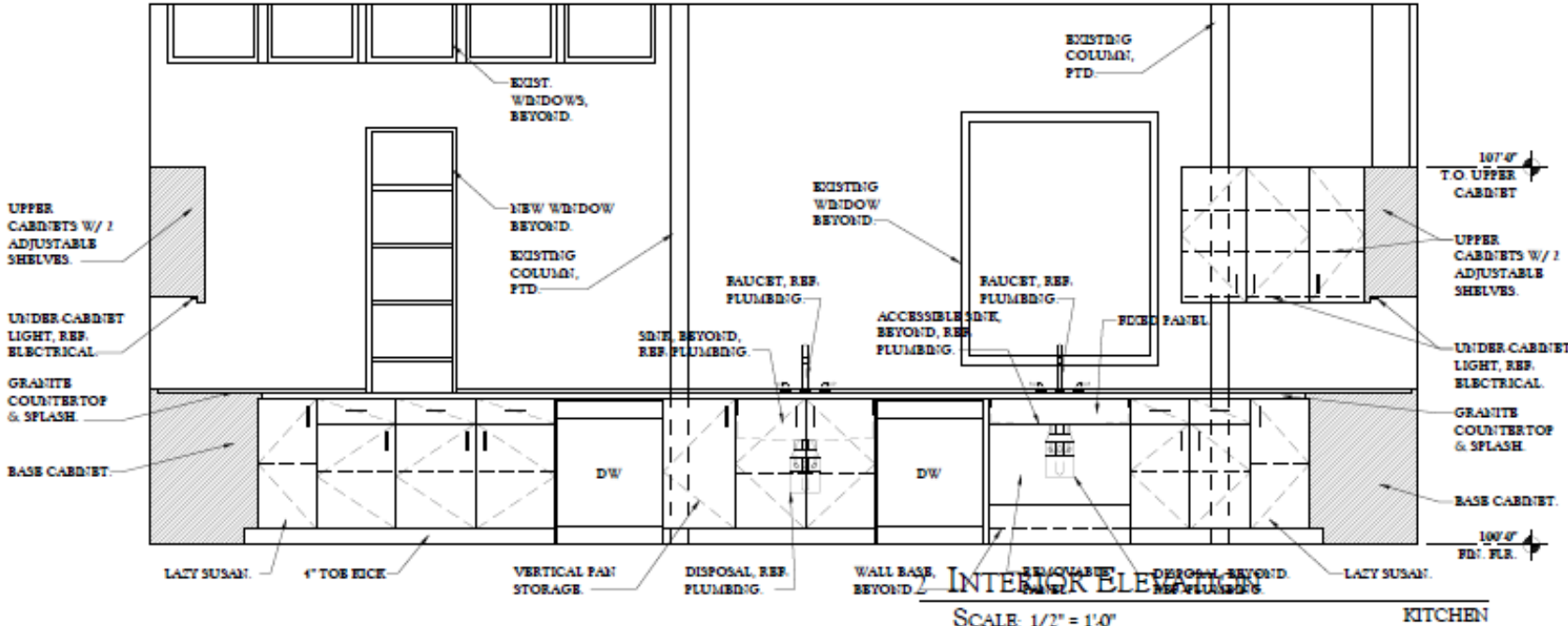
Lounge Highlights

- increase from 554 sf to 655 sf
- café ambiance
- natural light!
- garden storefront window
- additional window on patio
- varied seating options
- bar countertop
- outlets for crockpots, laptops, & phones
- room for centerline buffet tables accessible on both sides

New Appliances

- 6-burner induction cooktop
- countertop microwave
- 30" double wall convection oven
- 30" single wall convection oven
- one 33" single compartment kitchen sink (9" depth)
- one 33" ADA single compartment kitchen sink (6" depth)
- two 27 cu. ft. side by side refrigerators
- under-cabinet icemaker
- water heater
- water softener system

West Wall



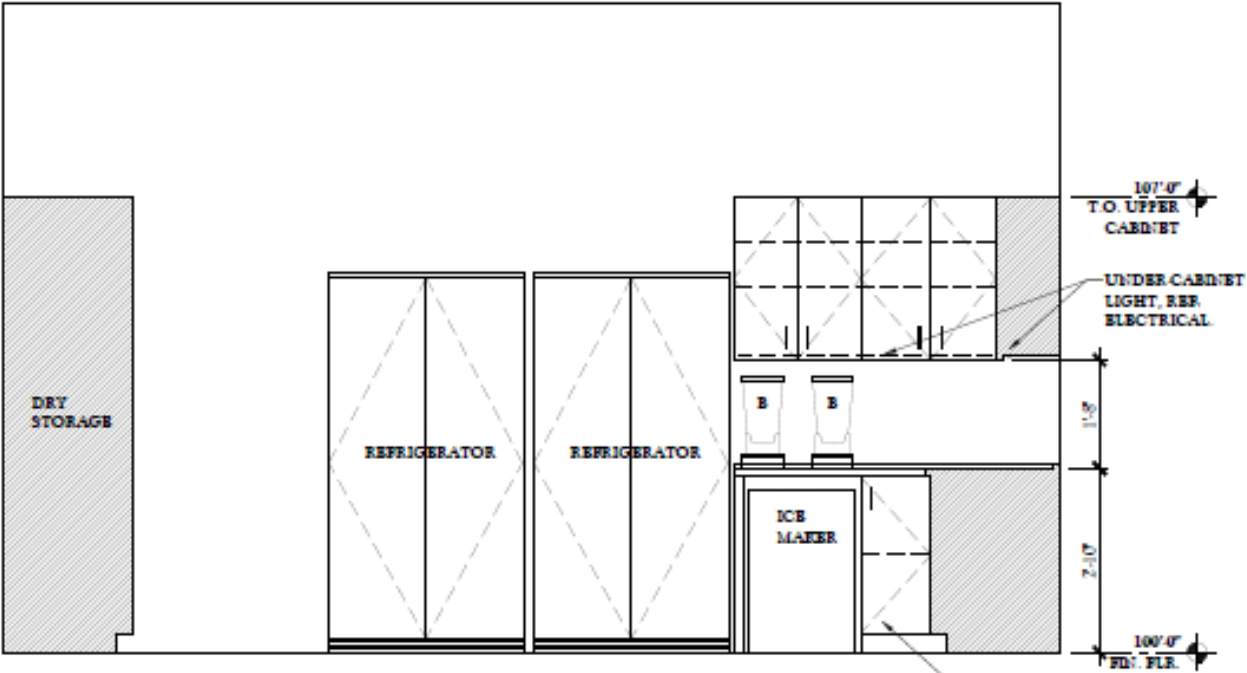
North Wall



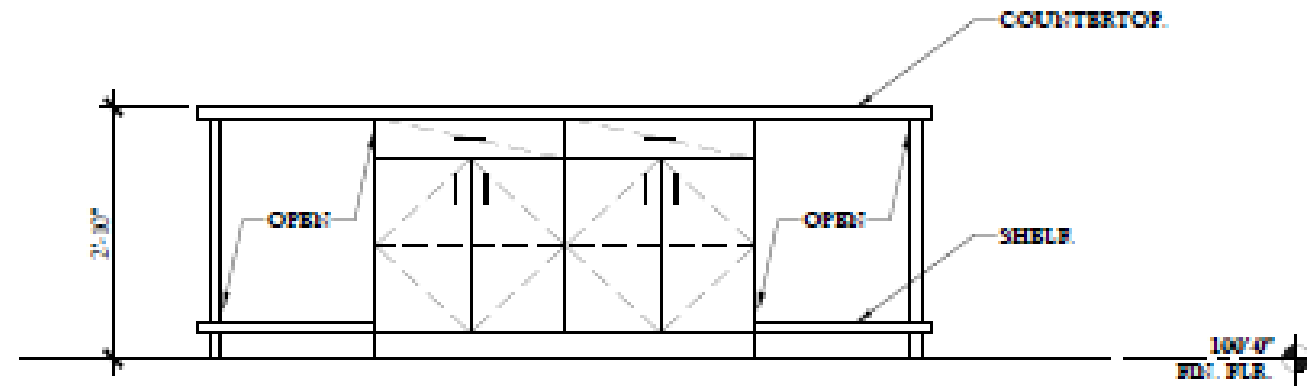
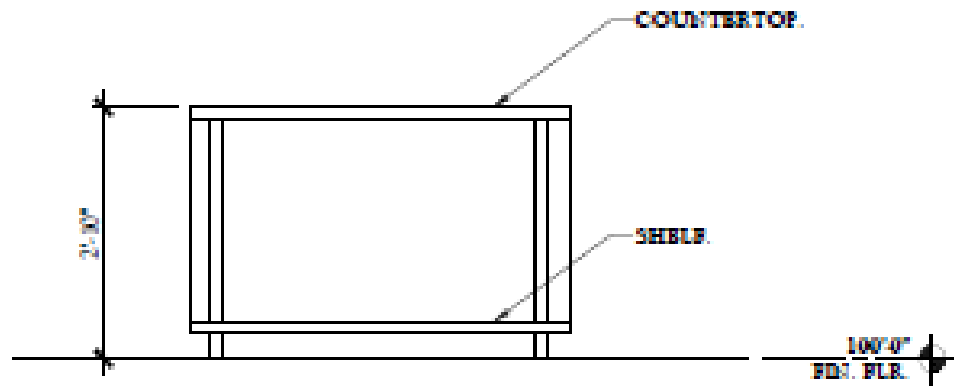
East Wall



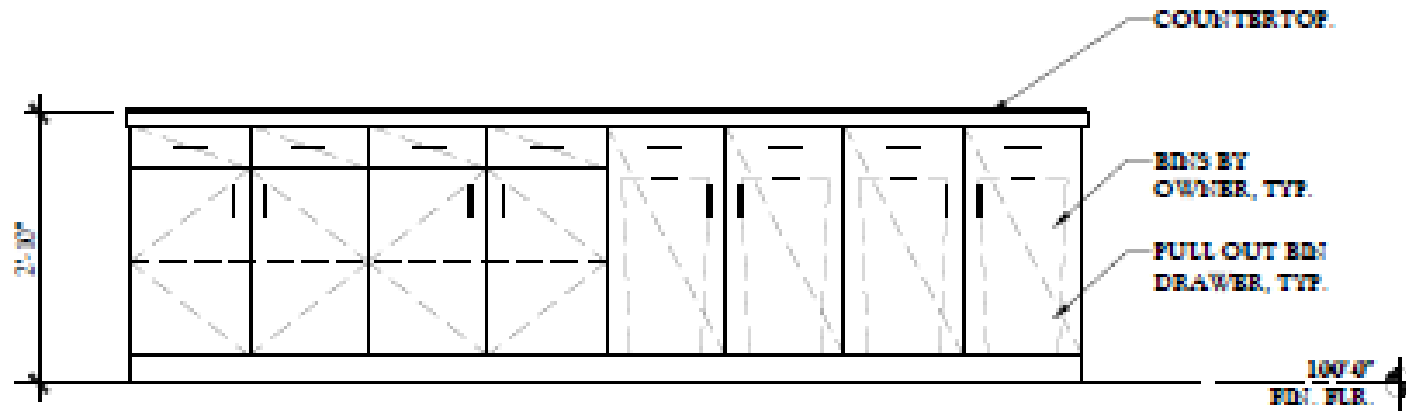
South Wall

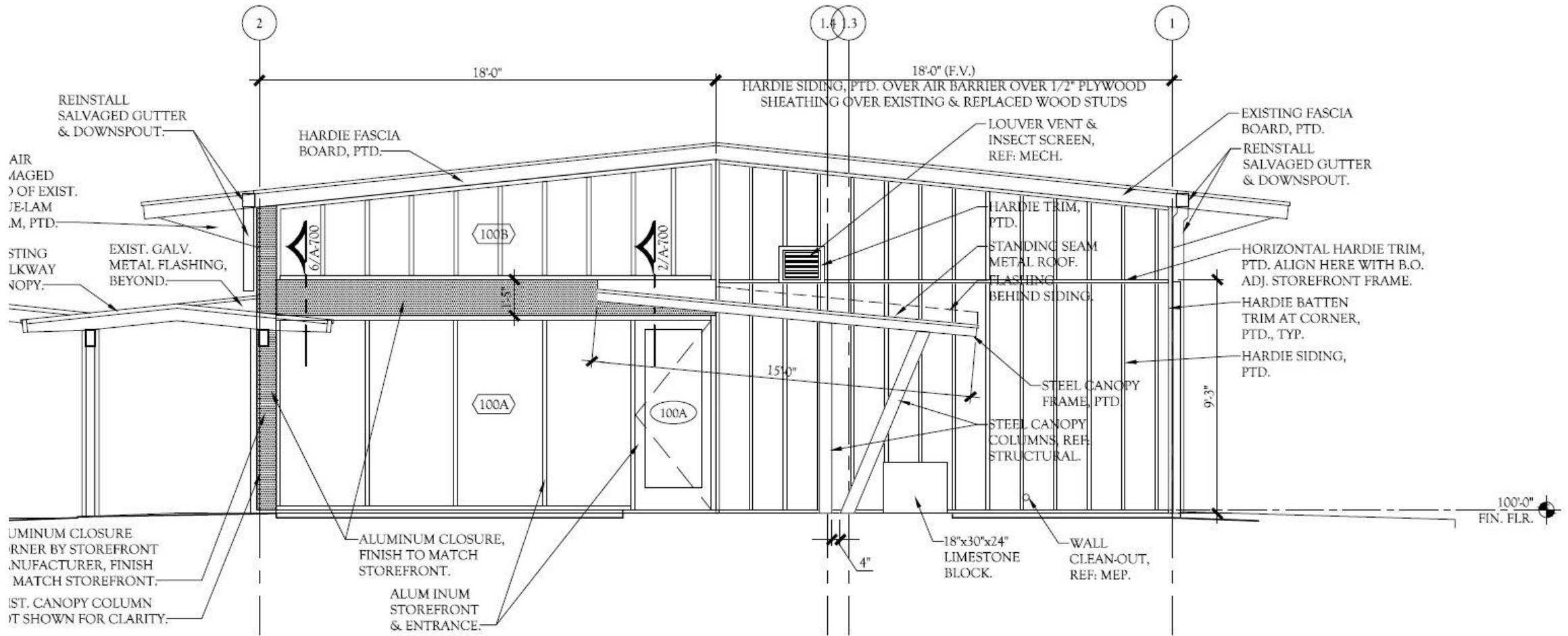


Island for Kitchen



Built-in Recycling Station for Lounge

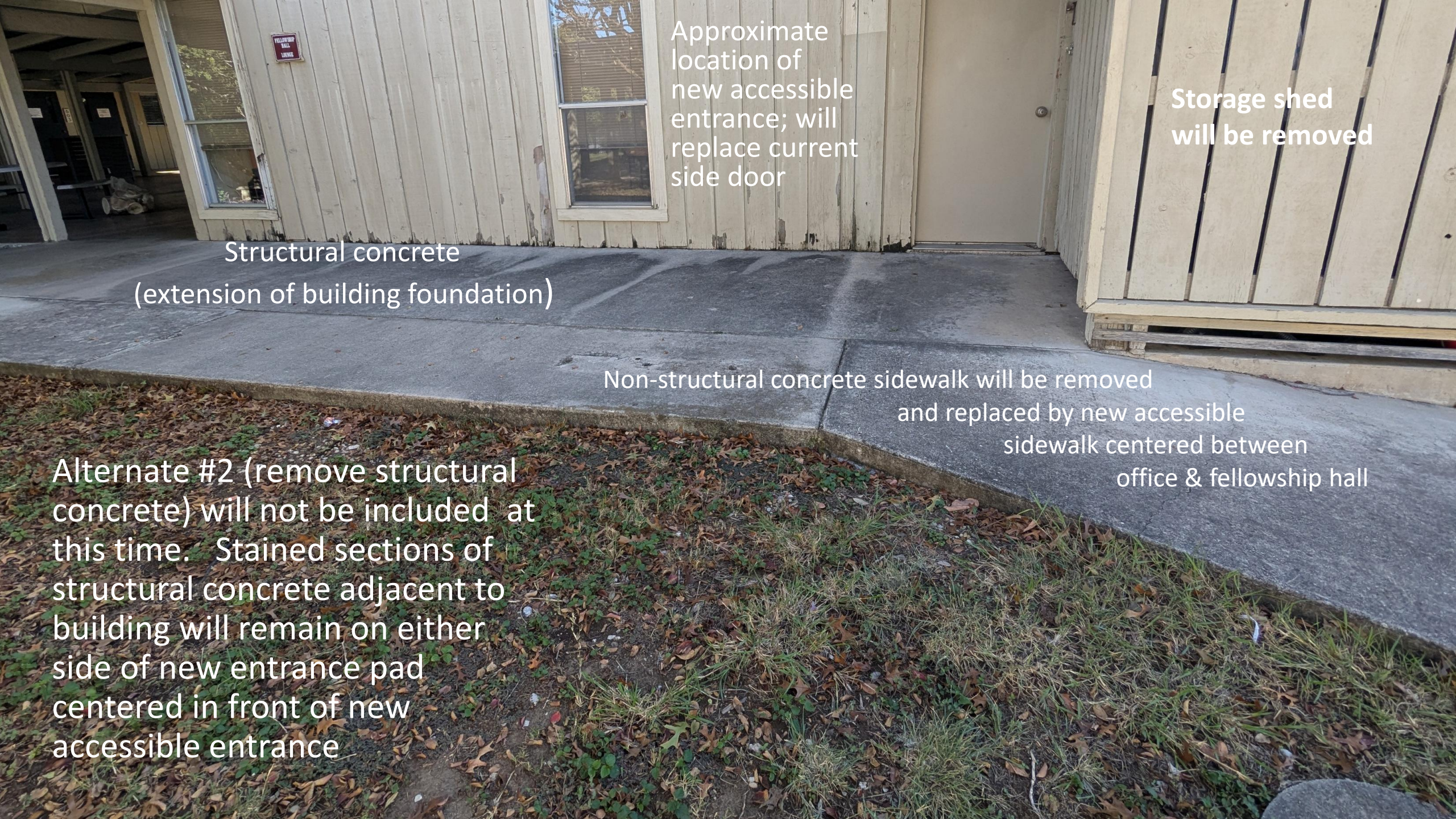




4 NORTH ELEVATION

SCALE: 1/4" = 1'-0"

Alternate 1 (entrance canopy)
will not be included at this time due to cost (\$43,298)



Approximate location of new accessible entrance; will replace current side door

Storage shed will be removed

Structural concrete (extension of building foundation)

Non-structural concrete sidewalk will be removed and replaced by new accessible sidewalk centered between office & fellowship hall

Alternate #2 (remove structural concrete) will not be included at this time. Stained sections of structural concrete adjacent to building will remain on either side of new entrance pad centered in front of new accessible entrance

New entry
“courtyard” between
Fellowship Hall & office
building with new
centered accessible
sidewalk leading from
west parking lot to
new accessible
entrance to lounge

